

G733



4-LOBE HANDWHEEL WITH SMOOTH HOLE INSERT

Materials:

Reinforced polyamide.
Resistant to oils and greases.

Surface finish:

Satin.

Colour:

Black (RAL 9011).

Inserts:

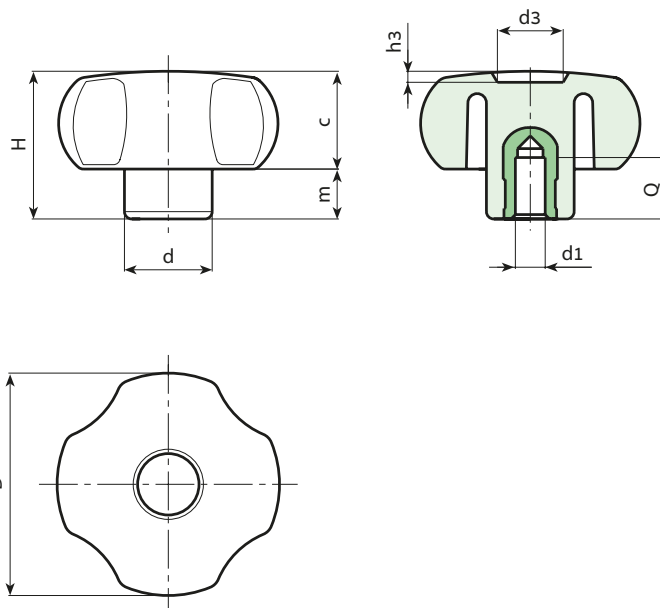
(*) Brass insert with smooth blind hole (hole tolerance H7).

ATTENTION: hole cannot be widened.

(#) Galvanised steel insert with blind smooth hole (hole tolerance H10).

Special requests:

- Upon request and for special quantities inserts can be supplied in different materials.
- Upon request and for special quantities available in the colours indicated in the chart [page].



Stock availability as % (🛒)
90% (●) - 40% (●) - 5% (●)

🛒	art.	D	H	d	c	m	d3	h3	Dm	d1H7	Q	🛒
●	G73330.TD0601	30	23	15	13.5	9.5	12	2	-	(*)06	15	16
●	G73330.TD0801	30	23	15	13.5	9.5	12	2	-	(*)08	15	17
●	G73340.TD0601	40.5	29.5	15.5	18.5	11	12	3	-	(*)06	15	24
●	G73340.TD0801	40.5	29.5	15	18.5	11	12	3	-	(*)08	15	28
●	G73340.TD1001	40.5	29.5	17	18.5	11	12	3	-	(*)10	15	30
●	G73350.TD0601	49	32	20.5	21.5	11	14.5	2.5	12	(#)06	18	60
●	G73350.TD0801	49	32	20.5	21.5	11	14.5	2.5	12	(#)08	18	62
●	G73350.TD1001	49	32	20.5	21.5	11	14.5	2.5	12	(#)10	18	63
●	G73360.TP0501	59	40	23	25	15	24	4	12	(#)05	18	90
●	G73360.TD0801	59	40	23	25	15	24	4	12	(#)08	18	93
●	G73360.TD1001	59	40	23	25	15	24	4	12	(#)10	18	96
●	G73380.TP0501	79	41	30	24	17	21	3	18	(#)05	24	165
●	G73380.TD0801	79	41	30	24	17	21	3	18	(#)08	24	159
●	G73380.TD1201	79	41	30	24	17	21	3	18	(#)12	24	153

Attention: (#) for a minimum of 200 pieces the diameter d1 can be produced with the requested dimensions with H10 tolerance.
Dm = Maximum obtainable diameter for subsequent machining (widening)