

F289



STAR HANDWHEEL WITH STEEL HUB AND THREADED STUD

Materials:

Reinforced polyamide.
Resistant to oils and greases.

Surface finish:

Satin.

Colour:

Black (RAL 9011).

Inserts:

F289:

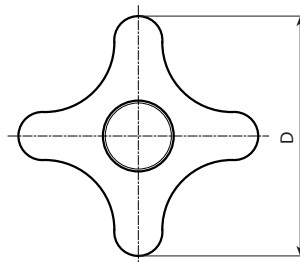
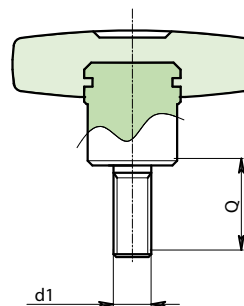
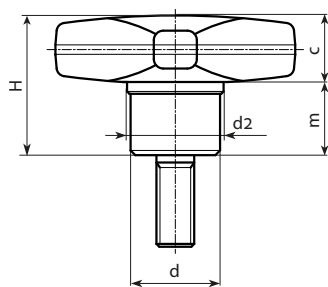
Galvanised steel insert with threaded stud (thread tolerance 6g).

F289CIN:

Stainless steel insert with threaded stud (Aisi 303) (thread tolerance 6g).

Special requests:

- Upon request and for special quantities inserts can be supplied with customised lengths.
- Upon request and for special quantities available in the colours indicated in the chart (attention: reduced range) [page].



Version F289: Galvanised steel hub.

Stock availability as % (🛒)
90% (●) - 40% (●) - 5% (●)

Art.	D	H	d	c	m	LM	d1 _{6g}	Q	g
F28932.TM06X..01	32	22	13	11	11	45	M6	A.R.	-
F28940.TM08X..01	40	24	14	12	12	55	M8	A.R.	-
F28950.TM10X..01	50	29	18	14	15	60	M10	A.R.	-
F28960.TM12X..01	60	34	20	16	18	60	M12	A.R.	-

Enter the selected stud length in place of the two dots . . in the item code.

A.R. = Upon request, for a minimum of 150 pieces.

LM = Maximum mouldable length.

Version F289 CIN: Stainless steel hub (Aisi 303).

INOX

Art.	D	H	d	c	m	LM	d1 _{6g}	Q	g
F28932.TM06X..01CIN	32	22	13	11	11	35	M6	A.R.	-
F28940.TM08X..01CIN	40	24	14	12	12	45	M8	A.R.	-
F28950.TM10X..01CIN	50	29	18	14	15	50	M10	A.R.	-
F28960.TM12X..01CIN	60	34	20	16	18	50	M12	A.R.	-

Enter the selected stud length in place of the two dots . . in the item code.

A.R. = Upon request, for a minimum of 150 pieces.

LM = Maximum mouldable length.