

# F271



## QUICK RELEASE STAR HANDWHEEL WITH STEEL HUB AND THREADED HOLE

### Materials:

Reinforced polyamide.  
Resistant to oils and greases.

### Surface finish:

Satin.

### Colour:

Black (RAL 9011).

### Inserts:

**F271:**  
Galvanised steel insert with threaded through hole, with groove for quick release.

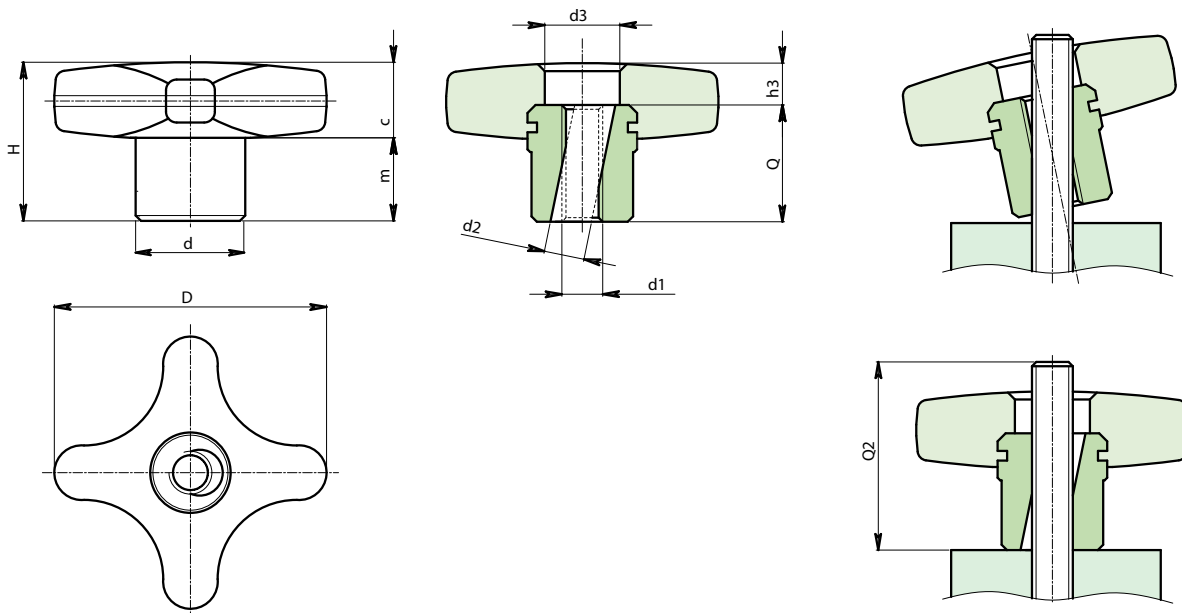
**F271CIN:**  
Stainless steel insert (Aisi 303) with threaded through hole, with groove for quick release.

### Special Requests:

- None.

### ATTENTION:

TO GUARANTEE CORRECT OPERATION OF THE QUICK RELEASE HANDWHEEL, THE THREADED STUD MUST HAVE A MINIMUM LENGTH EQUAL TO Q2.



### Version F271: Galvanised steel hub.

Stock availability as % (🛒)  
90% (●) - 40% (●) - 5% (●)

🛒	Art.	D	d	d2	d3	H	h3	m	c	d1	Q	Q2	📦
●	F27140.TM0801P	40	16	8.5	14	26	4	14	12	M8	22	35	31
●	F27150.TM1001P	50	20	10.5	18	34	4	20	14	M10	30	43	63

### Version F271 PIN: Stainless steel hub (Aisi 303).



🛒	Art.	D	d	d2	d3	H	h3	m	c	d1	Q	Q2	📦
●	F27140.TM0801PIN	40	16	8.5	14	26	4	14	12	M8	22	35	31
●	F27150.TM1001PIN	50	20	10.5	18	34	4	20	14	M10	30	43	63