

# F270



## HIGH CLAMPING STAR HANDWHEEL WITH THREADED STUD

### Materials:

Reinforced polyamide.  
Resistant to oils and greases.

### Surface finish:

Satin.

### Colour:

Black (RAL 9011).

### Inserts:

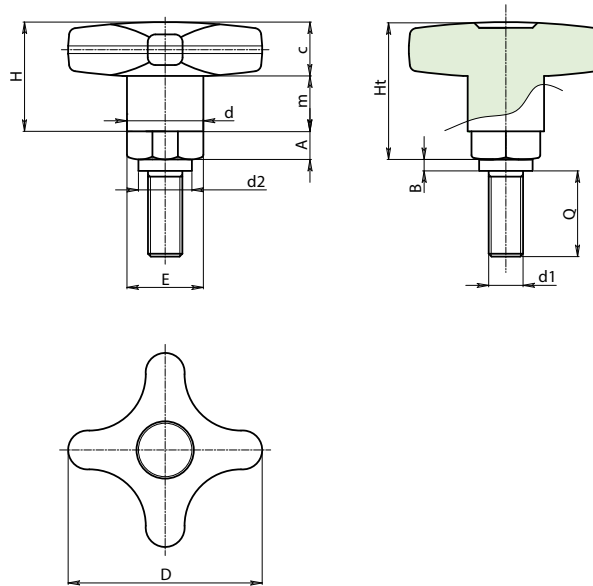
Nickel-plated brass insert with threaded stud (thread tolerance 6g).

### Special Requests:

- Upon request and for special quantities inserts can be supplied with customised lengths.
- Upon request and for special quantities available in the colours indicated in the chart (attention: reduced range) [page ].

### ATTENTION:

For a standard lock turn the knob. For a tighter lock, use a hex wrench to tighten the hex nut.



Stock availability as % (🛒)  
90% (●) - 40% (●) - 5% (●)

| 🛒 | Art.             | D  | d  | d2 | H  | Ht | A  | B | E  | m  | c  | d1 <sub>6g</sub> | Q  | 🛒  |
|---|------------------|----|----|----|----|----|----|---|----|----|----|------------------|----|----|
| ● | F27050.TM10X2501 | 50 | 18 | 15 | 24 | 34 | 10 | 4 | 17 | 15 | 14 | M10              | 25 | 97 |