

F269



HIGH CLAMPING STAR HANDWHEEL WITH THREADED INSERT

Materials:

Reinforced polyamide.
Resistant to oils and greases.

Surface finish:

Satin.

Colour:

Black (RAL 9011).

Inserts:

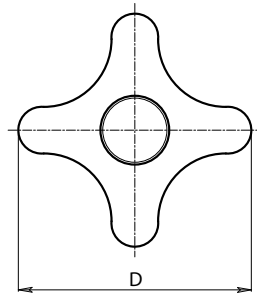
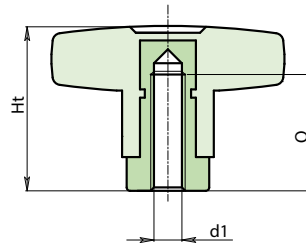
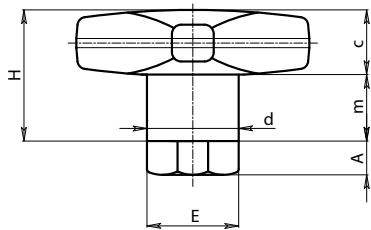
Nickel-plated brass insert with female threaded hole (thread tolerance 6H).

Special Requests:

- Upon request and for special quantities available in the colours indicated in the chart (attention: reduced range) [page].

ATTENTION:

For a standard lock turn the knob. For a tighter lock, use a hex wrench to tighten the hex nut.



Stock availability as % (🛒)

90% (●) - 40% (●) - 5% (●)

🛒	Art.	D	d	H	Ht	A	E	m	c	d1 ^{6H}	Q	📦
●	F26950.TM0601	50	18	29	39	10	17	15	14	M6	25	72
●	F26950.TM0801	50	18	29	39	10	17	15	14	M8	25	67
●	F26950.TM1001	50	18	29	39	10	17	15	14	M10	25	60