

F188



SOLID STAR HANDWHEEL WITH THREADED THROUGH-HOLE INSERT

Materials:

Reinforced polyamide.
Resistant to oils and greases.

Surface finish:

Satin.

Colour:

Black (RAL 9011).

Inserts:

Version F188:

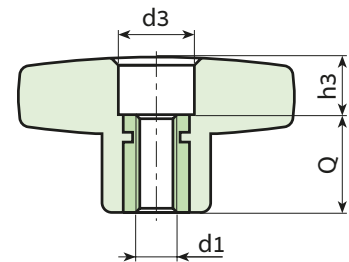
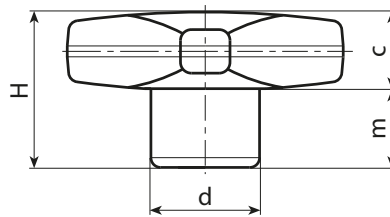
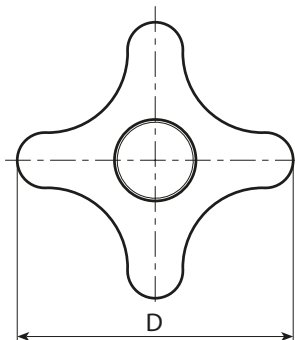
Brass insert with threaded through hole (thread tolerance 6H).

Version F188PIN:

Stainless steel insert with threaded through hole (Aisi 303) (thread tolerance 6H).

Special Requests:

- Upon request and for special quantities inserts can be supplied in different materials.
- Upon request and for special quantities available in the colours indicated in the chart (attention: reduced range) [page].



Version F188: with brass insert.

Stock availability as % (🛒)
90% (●) - 40% (●) - 5% (●)

🛒	Art.	D	H	d	c	m	d3	h3	d1 _{6H}	Q	g
●	F18832.TM0401	32	23	15	11	11	10	5	M4	18	9
●	F18832.TM0501	32	23	15	11	11	10	5	M5	18	10
●	F18832.TM0601	32	23	15	11	11	10	5	M6	18	10.5
●	F18832.TM0801	32	23	15	11	11	10	5	M8	18	11
●	F18840.TM0601	40	24.5	16	12	12.5	12	6.5	M6	18	13
●	F18840.TM0801	40	24.5	16	12	12.5	12	6.5	M8	18	15
●	F18840.TM1001	40	24.5	16	12	12.5	12	6.5	M10	18	16
●	F18850.TM0601	50	29	20	14	15	14	11	M6	18	23
●	F18850.TM0801	50	29	20	14	15	14	11	M8	18	24
●	F18850.TM1001	50	29	20	14	15	14	11	M10	18	25
●	F18850.TM1201	50	29	20	14	15	14	11	M12	18	26
●	F18860.TM0801	60	34	24	15.5	18.5	16	16	M8	18	34
●	F18860.TM1001	60	34	24	15.5	18.5	16	16	M10	18	38
●	F18860.TM1201	60	34	24	15.5	18.5	16	16	M12	18	40
●	F18860.TM1401	60	34	24	15.5	18.5	16	16	M14	18	45

Version F188PIN: with stainless steel insert (Aisi 303).

INOX

🛒	Art.	D	H	d	c	m	d3	h3	d1 _{6H}	Q	g
●	F18832.TM0501PIN	32	23	15	11	11	10	5	M5	18	10
●	F18832.TM0601PIN	32	23	15	11	11	10	5	M6	18	10.5
●	F18832.TM0801PIN	32	23	15	11	11	10	5	M8	18	11
●	F18840.TM0601PIN	40	24.5	16	12	12.5	12	6.5	M6	18	13
●	F18840.TM0801PIN	40	24.5	16	12	12.5	12	6.5	M8	18	15
●	F18840.TM1001PIN	40	24.5	16	12	12.5	12	6.5	M10	18	16
●	F18850.TM0801PIN	50	29	20	14	15	14	11	M8	18	24
●	F18850.TM1001PIN	50	29	20	14	15	14	11	M10	18	25
●	F18850.TM1201PIN	50	29	20	14	15	14	11	M12	18	26
●	F18860.TM0801PIN	60	34	24	15.5	18.5	16	16	M8	18	34
●	F18860.TM1001PIN	60	34	24	15.5	18.5	16	16	M10	18	38
●	F18860.TM1201PIN	60	34	24	15.5	18.5	16	16	M12	18	40