

F186



SOLID STAR HANDWHEEL WITH FEMALE THREADED INSERT

Materials:

Reinforced polyamide.
Resistant to oils and greases.

Surface finish:

Satin.

Colour:

Black (RAL 9011).

Inserts:

Version F186:

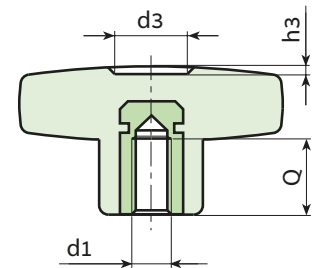
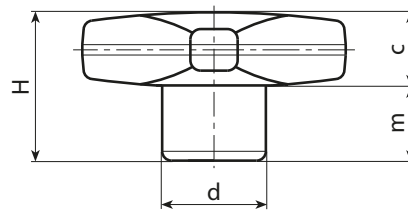
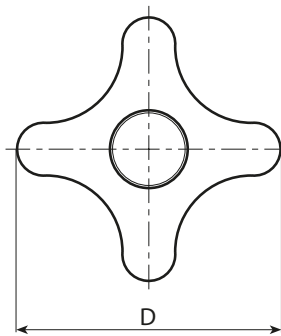
Brass insert with female threaded hole (thread tolerance 6H).

Version F186CIN:

Stainless steel insert with female threaded hole (Aisi 303) (thread tolerance 6H).

Special Requests:

- Upon request and for special quantities inserts can be supplied in different materials.
- Upon request and for special quantities available in the colours indicated in the chart (attention: reduced range) [page].



Stock availability as % (🛒)
90% (●) - 40% (●) - 5% (●)

Version F186: with brass insert.

🛒	Art.	D	H	d	c	m	d3	h3	d1 _{6H}	Q	g
●	F18632.TM0401	32	23	15	11	12	11	1.5	M4	7	11
●	F18632.TM0501	32	23	15	11	12	11	1.5	M5	14	11.5
●	F18632.TM0601	32	23	15	11	12	11	1.5	M6	10	12
●	F18632.TM0801	32	23	15	11	12	11	1.5	M8	14	12.5
●	F18632.TM1001	32	23	15	11	12	11	1.5	M10	14	13
●	F18640.TM0501	40	24.5	16	12	12.5	13	1.5	M5	14	14
●	F18640.TM0601	40	24.5	16	12	12.5	13	1.5	M6	16	15
●	F18640.TM0801	40	24.5	16	12	12.5	13	1.5	M8	14	16
●	F18640.TM1001	40	24.5	16	12	12.5	13	1.5	M10	14	17
●	F18650.TM0601	50	29	20	14	15	14	2	M6	16	25
●	F18650.TM0801	50	29	20	14	15	14	2	M8	14	26
●	F18650.TM1001	50	29	20	14	15	14	2	M10	14	27
●	F18650.TM1201	50	29	20	14	15	14	2	M12	18	29
●	F18660.TM0801	60	34	24	15.5	18.5	18	2	M8	19	40
●	F18660.TM1001	60	34	24	15.5	18.5	18	2	M10	21	43
●	F18660.TM1201	60	34	24	15.5	18.5	18	2	M12	18	44
●	F18660.TM1401	60	34	24	15.5	18.5	18	2	M14	19	47

Version F186CIN: with stainless steel insert (Aisi 303).

🛒	Art.	D	H	d	c	m	d3	h3	d1 _{6H}	Q	g
●	F18632.TM0501CIN	32	23	15	11	12	11	1.5	M5	14	11.5
●	F18632.TM0601CIN	32	23	15	11	12	11	1.5	M6	10	12
●	F18632.TM0801CIN	32	23	15	11	12	11	1.5	M8	14	12.5
●	F18640.TM0601CIN	40	24.5	16	12	12.5	13	1.5	M6	16	15
●	F18640.TM0801CIN	40	24.5	16	12	12.5	13	1.5	M8	14	16
●	F18640.TM1001CIN	40	24.5	16	12	12.5	13	1.5	M10	14	17
●	F18650.TM0801CIN	50	29	20	14	15	14	2	M8	14	26
●	F18650.TM1001CIN	50	29	20	14	15	14	2	M10	14	27
●	F18650.TM1201CIN	50	29	20	14	15	14	2	M12	18	29
●	F18660.TM0801CIN	60	34	24	15.5	18.5	18	2	M8	19	40
●	F18660.TM1001CIN	60	34	24	15.5	18.5	18	2	M10	21	43
●	F18660.TM1201CIN	60	34	24	15.5	18.5	18	2	M12	18	44

INOX