

F178CIN



6-LOBE SOLID HANDWHEEL WITH THREADED STAINLESS STEEL STUD

INOX

Materials:

Reinforced polyamide.
Resistant to oils and greases.

Surface finish:

Satin.

Colour:

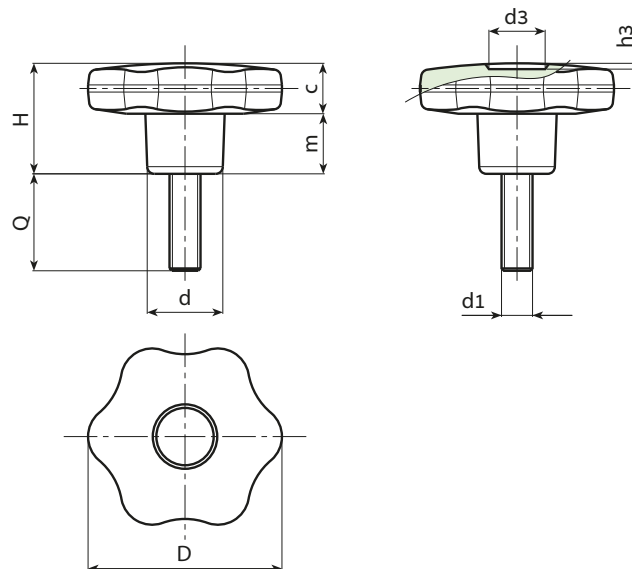
Black (RAL 9011).

Inserts:

Threaded stainless steel stud (Aisi 304) (thread tolerance 6g).

Special Requests:

- Upon request and for special quantities inserts can be supplied with customised lengths.
- Upon request and for special quantities available in the colours indicated in the chart (attention: reduced range) [page].



INOX

Stock availability as % (🛒)
90% (●) - 40% (●) - 5% (●)

Art.	D	H	d	c	m	d3	h3	LM	d1 _{6g}	Q	g
F17830.TM05X..01CIN	30	22	15	11	11	9	1.5	80	M5	16-20-40	14-15-17
F17830.TM06X..01CIN	30	22	15	11	11	9	1.5	80	M6	16-20-30-40	16-17-18-19
F17830.TM08X..01CIN	30	22	15	11	11	9	1.5	80	M8	20-30	21-25
F17830.TM10X2001CIN	30	22	15	11	11	9	1.5	80	M10	20	28
F17840.TM06X..01CIN	40	24.5	17	12	12.5	12	1	130	M6	20-30-40	25-27-28
F17840.TM08X..01CIN	40	24.5	17	12	12.5	12	1	130	M8	20-30-40	30-33-36
F17840.TM10X4001CIN	40	24.5	17	12	12.5	12	1	130	M10	40	45
F17850.TM08X4001CIN	50	29	20	14	15	14.5	1.5	130	M8	40	55
F17850.TM10X..01CIN	50	29	20	14	15	14.5	1.5	130	M10	20-30-40-50	55-60-65-70
F17850.TM12X..01CIN	50	29	20	14	15	14.5	1.5	130	M12	A.R.	-
F17860.TM08X4001CIN	60	34	24	16	18	18	1.5	130	M8	40	74
F17860.TM10X4001CIN	60	34	24	16	18	18	1.5	130	M10	40	74-80-85
F17860.TM12X..01CIN	60	34	24	16	18	18	1.5	130	M12	20-40	95-109
F17860.TM14X..01CIN	60	34	24	16	18	18	1.5	130	M14	A.R.	-

Enter the selected stud length in place of the two dots . . in the item code. Customised stud length available for a minimum of 150 pieces.

A.R. = Upon request, for a minimum of 150 pieces.

LM = Maximum mouldable length.