

F176

6-LOBE SOLID HANDWHEEL WITH INSERT AND BORE



Materials:

Reinforced polyamide.
Resistant to oils and greases.

Surface finish:

Satin.

Colour:

Black (RAL 9011).

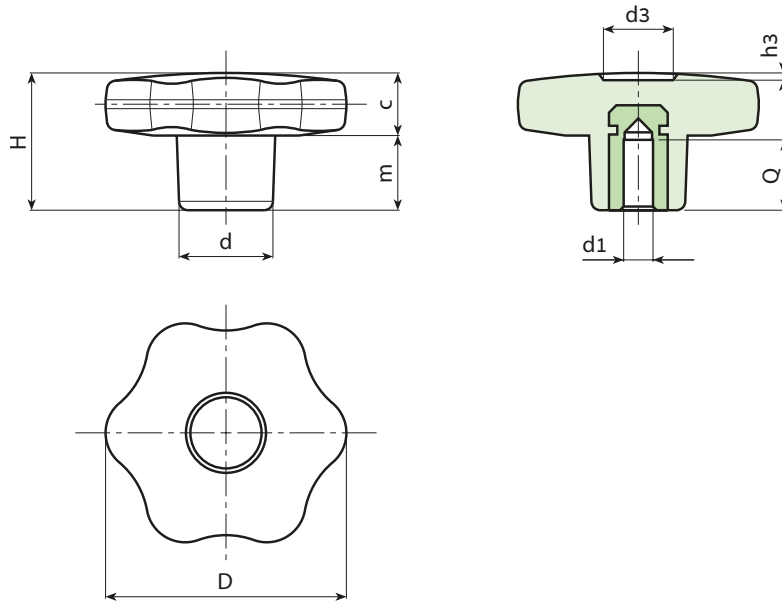
Inserts:

Brass insert with blind smooth bore (bore tolerance H7).
(*) Galvanised steel insert with blind smooth bore (bore tolerance H10).

ATTENTION: bore cannot be widened.

Special Requests:

- Upon request and for special quantities inserts can be supplied in different materials.
- Upon request and for special quantities available in the colours indicated in the chart (attention: reduced range) [page].



Stock availability as % (🛒)
90% (●) - 40% (●) - 5% (●)

🛒	Art.	D	H	d	c	m	d3	h3	d1 _{H7}	Q	🛒
●	F17630.TD0601	30	22	15	11	11	9	1.5	6	15	17
●	F17630.TD0801	30	22	15	11	11	9	1.5	8	15	19
●	F17640.TD0601	40	24.5	17	12	12.5	12	1	6	15	24
●	F17640.TD0801	40	24.5	17	12	12.5	12	1	8	15	26
●	F17640.TD1001	40	24.5	17	12	12.5	12	1	10	17	28
●	F17650.TD0601	50	29	20	14	15	14.5	1.5	6	15	39
●	F17650.TD0801	50	29	20	14	15	14.5	1.5	8	15	41
●	F17650.TD1001	50	29	20	14	15	14.5	1.5	10	17	42
●	F17660.TD0801	60	34	24	16	18	18	1.5	(*)08	18	78
●	F17660.TD1001	60	34	24	16	18	18	1.5	(*)10	25	73
●	F17660.TD1201	60	34	24	16	18	18	1.5	(*)12	22	75