

# C199C

UPDATE



## SOLID CONTROL HANDWHEEL WITH CENTRAL FOLDAWAY REVOLVING HANDLE

### Materials:

Reinforced and stabilized polyamide. Resistant to oils and greases.

### Surface finish:

Satin.

### Colour:

Black (RAL 9011).

### Central cap:

Grey polyamide (RAL 7035 code 13).

### Alternative cap colours:

Orange (RAL 2004 code 02).  
 Blue (RAL 5015 code 07).  
 Yellow (RAL 1021 code 10).  
 Red (RAL 3000 code 16).  
 Green (RAL 6024 code 17).  
 Black (RAL 9011 code 01).

### Main insert:

Galvanised steel insert with smooth through bore (tolerance H10).

### Lateral handle:

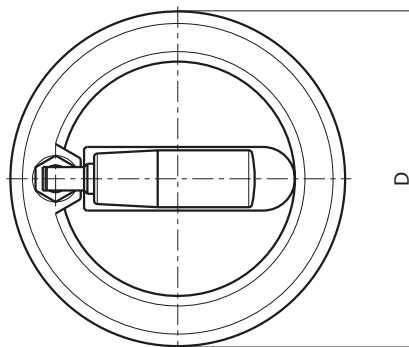
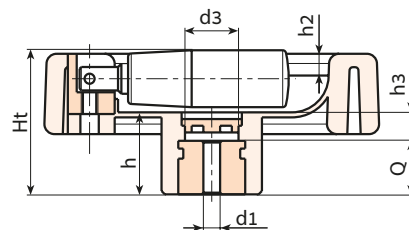
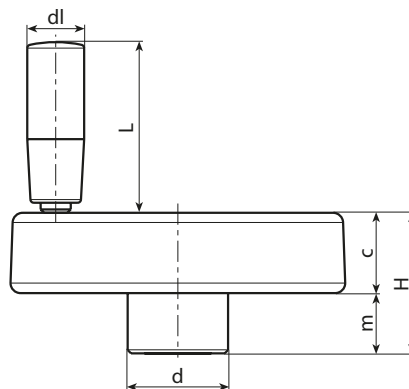
Revolving handle that folds into the handwheel, with hexagonal connection.  
 Reinforced polyamide handle. Black-oxide treated internal mechanism. Fixed with black-oxide treated hexagon socket button head screw ISO 7838.

### Fixing method:

For fixing systems, or execution of keyways or square holes, please refer to the technical notes attached to the catalogue [page].

### Special requests:

- On request and with a minimum of 50 pieces, the inserts can be supplied with the hole  $d_1$  with H7 tolerance and black-oxide finish. Add the letters ZB to the standard code. Example: C199100.TD1001PZB.
- Upon request and for special quantities inserts can be supplied with custom hole diameter  $d_1$ .
- Upon request and for special quantities inserts can be supplied in different materials/with different coatings.
- Upon request and for special quantities handwheels, handles and caps are available in the colours indicated in the chart (attention: reduced range) [page].



Stock availability as % (🛒)  
 90% (🟢) - 40% (🟡) - 5% (🔴)

🛒	Art.	D	H	Ht	h	d	m	c	d3	h3	h2	dl	L	Dm	d1 <sub>H10</sub>	Q	🛒
🟢	C199080.TP0501P	80	33	35	19	25	15	18	15	6	4	16	38	12	5	13	113
🟢	C199080.TD0801P	80	33	35	19	25	15	18	15	6	4	16	38	12	8	13	111
🟢	C199080.TD1001P	80	33	35	19	25	15	18	15	6	4	16	38	12	10	13	110
🟢	C199100.TP0501P	100	42	43.5	24	30	18	24	17	8	6.5	17	48	16	5	16	240
🟢	C199100.TD0801P	100	42	43.5	24	30	18	24	17	8	6.5	17	48	16	8	16	238
🟢	C199100.TD1001P	100	42	43.5	24	30	18	24	17	8	6.5	17	48	16	10	16	237
🟢	C199100.TD1201P	100	42	43.5	24	30	18	24	17	8	6.5	17	48	16	12	16	232
🟢	C199100.TD1401P	100	42	43.5	24	30	18	24	17	8	6.5	17	48	16	14	16	230

Attention: For a minimum of 50 pieces the diameter  $d_1$  can be customised (hole tolerance H10 galvanised and H7 black-oxide treated).  
 Dm = Maximum obtainable diameter for subsequent machining (widening).