

C198



SOLID CONTROL HANDWHEEL WITH REVOLVING FOLDING HANDLE

Materials:

Reinforced and stabilized polyamide.
Resistant to oils and greases.

Surface finish: **Satin.**

Colour: **Black (RAL 9011).**

Central cap:

Grey polyamide (RAL 7035 code 13).

Alternative cap colours:

Orange (RAL 2004 code 02).
Blue (RAL 5015 code 07).
Yellow (RAL 1021 code 10).
Red (RAL 3000 code 16).
Green (RAL 6024 code 17).
Black (RAL 9011 code 01).

Main insert:

Galvanised steel insert with smooth through bore (tolerance H10).

Lateral insert:

Brass insert with threaded through hole.

Lateral handle:

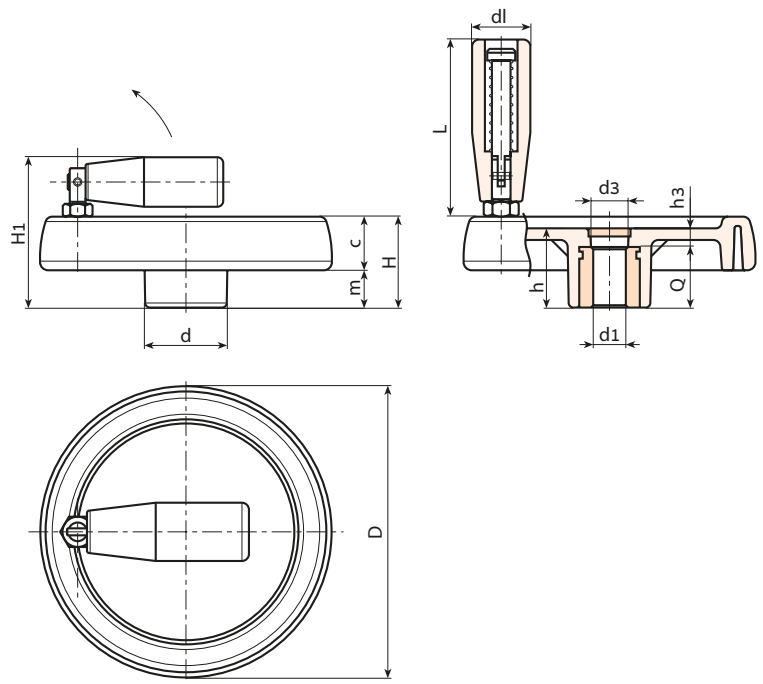
Revolving, folding handle art. M136 [page].

Fixing method:

For fixing systems, or execution of keyways or square holes, please refer to the technical notes attached to the catalogue [page].

Special requests:

- On request and with a minimum of 50 pieces, the inserts can be supplied with the hole d1 with H7 tolerance and black-oxide finish. Add the letters ZB to the standard code. Example: C198100.TD1001PZB.
- Upon request and for special quantities inserts can be supplied with custom hole diameter d1.
- Upon request and for special quantities inserts can be supplied in different materials/with different coatings.
- Upon request and for special quantities handwheels, handles and caps are available in the colours indicated in the chart (attention: reduced range) [page].



Stock availability as % (🛒)
90% (●) - 40% (◐) - 5% (◑)

🛒	Art.	D	H	H1	h	d	m	c	d3	h3	dl	L	Dm	d1 H10	Q	📦
●	C198080.TP0501P	81	33	57	29	25	16	17	16	9	20	56	12	5	20	145
●	C198080.TD0801P	81	33	57	29	25	16	17	16	9	20	56	12	8	20	144
●	C198080.TD1001P	81	33	57	29	25	16	17	16	9	20	56	12	10	20	143
●	C198080.TD1201P	81	33	57	29	25	16	17	16	9	20	56	12	12	20	143
●	C198100.TP0501P	100	39	63	34	30	18.5	20.5	16	10	20	56	16	5	24	235
●	C198100.TD1001P	100	39	63	34	30	18.5	20.5	16	10	20	56	16	10	24	233
●	C198100.TD1201P	100	39	63	34	30	18.5	20.5	16	10	20	56	16	12	24	232
●	C198125.TP0501P	125	44	74	37	36	20	24	26	13	25	76	18	5	24	360
●	C198125.TD0801P	125	44	74	37	36	20	24	26	13	25	76	18	8	24	358
●	C198125.TD1201P	125	44	74	37	36	20	24	26	13	25	76	18	12	24	355
●	C198125.TD1401P	125	44	74	37	36	20	24	26	13	25	76	18	14	24	353
●	C198125.TD1501P	125	44	74	37	36	20	24	26	13	25	76	18	15	24	352
●	C198150.TD0801P	150	54	89	44	38	25	29	26	12	26	89	22	8	32	670
●	C198150.TD1201P	150	54	89	44	38	25	29	26	12	26	89	22	12	32	665
●	C198150.TD1401P	150	54	89	44	38	25	29	26	12	26	89	22	14	32	663
●	C198150.TD1801P	150	54	89	44	38	25	29	26	12	26	89	22	18	32	655
●	C198175.TD0801P	173	57	92	47	40	25.5	31.5	26	15	26	97	22	8	32	810
●	C198175.TD1601P	173	57	92	47	40	25.5	31.5	26	15	26	97	22	16	32	800
●	C198175.TD2001P	173	57	92	47	40	25.5	31.5	26	15	26	97	22	20	32	797
●	C198200.TD0801P	202	59	94	49	44	24	35	27	13	26	97	28	8	36	1030
●	C198200.TD1401P	202	59	94	49	44	24	35	27	13	26	97	28	14	36	1020
●	C198200.TD1801P	202	59	94	49	44	24	35	27	13	26	97	28	18	36	1018
●	C198200.TD2001P	202	59	94	49	44	24	35	27	13	26	97	28	20	36	1015
●	C198250.TD0801P	249	68	100	58	59	29	39	36	22	26	97	28	8	36	1580

Attention: For a minimum of 50 pieces the diameter d1 can be customised (hole tolerance H10 galvanised and H7 black-oxide treated).
Dm = Maximum obtainable diameter for subsequent machining (widening).