

# C196

UPDATE

+135°  
-30°

PA6  
+G.F.

UL94  
HB

RoHS  
COMPLIANT

## SOLID CONTROL HANDWHEEL

### Materials:

Reinforced and stabilized polyamide.  
Resistant to oils and greases.

### Surface finish:

Satin.

### Colour:

Black (RAL 9011).

### Central cap:

Grey polyamide (RAL 7035 code 13).

### Alternative cap colours:

Orange (RAL 2004 code 02).  
Blue (RAL 5015 code 07).  
Yellow (RAL 1021 code 10).  
Red (RAL 3000 code 16).  
Green (RAL 6024 code 17).  
Black (RAL 9011 code 01).

### Main insert:

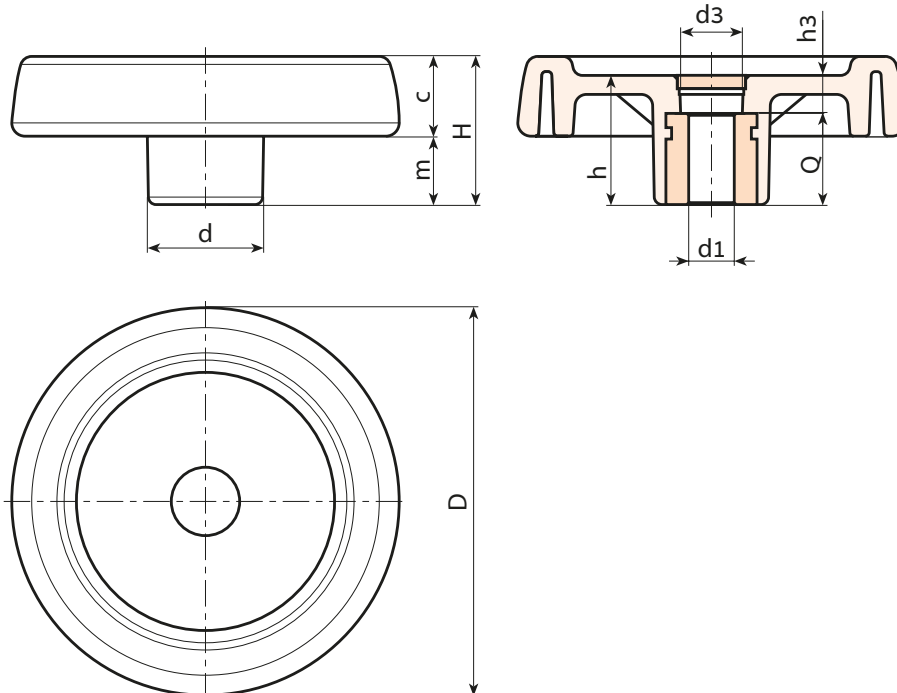
Galvanised steel insert with smooth through bore (tolerance H10).

### Fixing method:

For fixing systems, or execution of keyways or square holes, please refer to the technical notes attached to the catalogue [page ].

### Special requests:

- On request and with a minimum of 50 pieces, the inserts can be supplied with the hole d1 with H7 tolerance and black-oxide finish. Add the letters ZB to the standard code. Example: C196100.TD1001PZB.
- Upon request and for special quantities inserts can be supplied with custom hole diameter d1.
- Upon request and for special quantities inserts can be supplied in different materials/with different coatings.
- Upon request and for special quantities handwheels and caps are available in the colours indicated in the chart (attention: reduced range) [page ].



Stock availability as % (🛒)  
90% (●) - 40% (●) - 5% (●)

🛒	Art.	D	H	h	d	m	c	d3	h3	Dm	d1 <sub>H10</sub>	Q	g
●	C196080.TP0501P	81	33	29	25	16	17	16	9	12	5	20	100
●	C196080.TD0801P	81	33	29	25	16	17	16	9	12	8	20	99
●	C196080.TD1001P	81	33	29	25	16	17	16	9	12	10	20	99
●	C196080.TD1201P	81	33	29	25	16	17	16	9	12	12	20	98
●	C196100.TP0501P	100	39	34	30	18.5	20.5	16	10	16	5	24	192
●	C196100.TD0801P	100	39	34	30	18.5	20.5	16	10	16	8	24	190
●	C196100.TD1001P	100	39	34	30	18.5	20.5	16	10	16	10	24	187
●	C196100.TD1201P	100	39	34	30	18.5	20.5	16	10	16	12	24	185
●	C196125.TP0501P	125	44	37	36	20	24	26	13	18	5	24	295
●	C196125.TD1201P	125	44	37	36	20	24	26	13	18	12	24	290
●	C196150.TD0801P	150	54	44	38	25	29	26	12	22	8	32	520
●	C196150.TD1401P	150	54	44	38	25	29	26	12	22	14	32	515
●	C196175.TD0801P	173	57	47	40	25.5	31.5	26	15	22	8	32	660
●	C196200.TD0801P	202	59	49	44	24	35	27	13	28	8	36	870
●	C196250.TD0801P	249	68	58	59	29	39	36	22	28	8	36	1420

Attention: For a minimum of 50 pieces the diameter d1 can be customised (hole tolerance H10 galvanised and H7 black-oxide treated).  
Dm = Maximum obtainable diameter for subsequent machining (widening).