

B350

HANDLE WITH TUBE D. 30 AND VERTICAL ENDS



Materials:

- (1) Reinforced polyamide bracket for tube. Resistant to oils and greases.
- (2) Anodised aluminium alloy 6060 tube.
- (3) Turned round aluminium insert with threaded hole M08 for fastening hexagonal socket head cap screws.
- (4) Black oxide treated hexagonal socket head cap screw M08x70 (DIN 912).
- (5) Winged snap-fit LDPE cap for tubes.

Surface finish:

- (1-5) Satin.
- (2) Glossy anodised.

Colour:

- (1-5) Black (RAL 9011).

Tube:

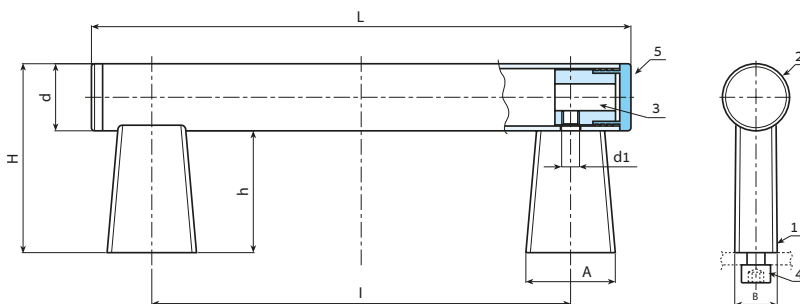
- Version B350-99: (2) Silver anodised.
Version B350-98: (2) Marbled black epoxy powder coating.

ATTENTION:

The handle is supplied disassembled, in single packs.

Special requests:

- None.



Version B350-99: with tube colour anodised silver

Stock availability as % (🛒)
90% (●) - 40% (●) - 5% (●)

🛒	art.	L	l	D	H	h	A	B	d1	g
●	B350150.TG300199	206	150	30	85	55	40	19	M8	270
●	B350200.TG300199	256	200	30	85	55	40	19	M8	290
●	B350250.TG300199	306	250	30	85	55	40	19	M8	309
●	B350300.TG300199	356	300	30	85	55	40	19	M8	327
●	B350350.TG300199	406	350	30	85	55	40	19	M8	345
●	B350400.TG300199	456	400	30	85	55	40	19	M8	363
●	B350500.TG300199	556	500	30	85	55	40	19	M8	400
●	B350600.TG300199	656	600	30	85	55	40	19	M8	436
●	B350700.TG300199	756	700	30	85	55	40	19	M8	473

Version B350-98: with tube colour marbled black

🛒	art.	L	l	D	H	h	A	B	d1	g
●	B350150.TG300198	206	150	30	85	55	40	19	M8	270
●	B350200.TG300198	256	200	30	85	55	40	19	M8	290
●	B350250.TG300198	306	250	30	85	55	40	19	M8	309
●	B350300.TG300198	356	300	30	85	55	40	19	M8	327
●	B350350.TG300198	406	350	30	85	55	40	19	M8	345
●	B350400.TG300198	456	400	30	85	55	40	19	M8	363
●	B350500.TG300198	556	500	30	85	55	40	19	M8	400
●	B350600.TG300198	656	600	30	85	55	40	19	M8	436
●	B350700.TG300198	756	700	30	85	55	40	19	M8	473

Arbel Agencies LTD.



11 Ba'alei Hamelacha st. Qiryat Bialik P.O.B 1095, ZIP 2751311, ISRAEL
+972(0)48736969 ☎ +972(0)48730708 📠 info@arbel-ltd.com 📧 www.arbel-ltd.com 🌐

