

B230

"EUROMODEL" SAFETY HANDLE WITH THROUGH HOLES AND CENTRAL CAP



MODELLO DEPOSITATO

Materials:

Reinforced polyamide.
Resistant to oils and greases.

Surface finish:

Satin.

Colour:

Black (RAL 9011).

Standard cap:

Rectangular cap in orange polyamide (RAL 2004 code 02).

Alternative cap colours:

Grey (RAL 7035 cod. 13).
Blue (RAL 5015 code 07).
Yellow (RAL 1021 code 10).
Red (RAL 3000 code 16).
Green (RAL 6024 code 17).
Black (RAL 9011 code 01).

Hole:

Smooth through hole obtained by moulding the plastic.

Version TS:

Seat for countersunk screw DIN 7991 / UNI 5933.

Version TC:

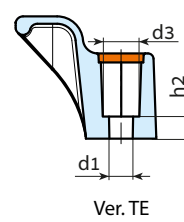
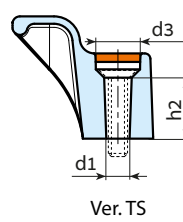
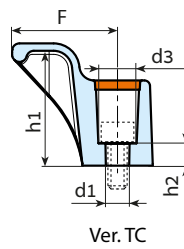
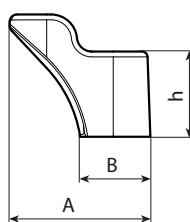
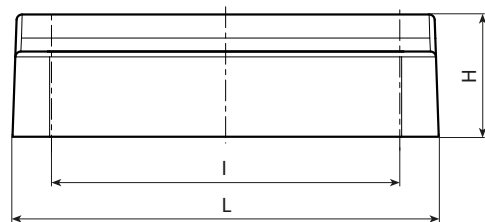
Seat for cylindrical head screw DIN 912 / UNI 5931.

Version TE:

Seat for hex head screw DIN 933 / UNI 4017, or for nut DIN 934 / UNI 5588.

Special requests:

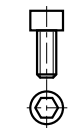
- Upon request and for special quantities available in the colours indicated in the chart [page].



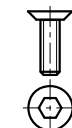
Ver. TC

Ver. TS

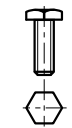
Ver. TE



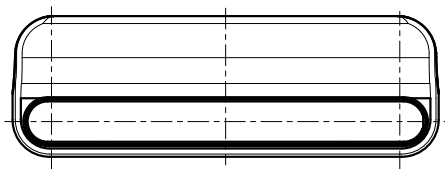
DIN 912



DIN 7991



UNI 5727



Stock availability as % (🛒)
90% (●) - 40% (●) - 5% (●)

Version TC: with hole for cylindrical head screws

🛒 art.	L	I	H	F	h	h1	h2	A	B	d3	d1	g
● B230094.TG06.50102TC	115	94	33	28,5	23	31	6	38	19	10,3	6,5	54

Version TS: with hole for countersunk head screws

🛒 art.	L	I	H	F	h	h1	h2	A	B	d3	d1	g
● B230094.TG06.50102TS	115	94	33	28,5	23	31	16,3	38	19	11,9	6,5	54

Version TC: with hole for hex head screws

🛒 art.	L	I	H	F	h	h1	h2	A	B	d3	d1	g
● B230094.TG06.50102TE	115	94	33	28,5	23	31	6	38	19	10	6,5	54



Arbel Agencies LTD.

11 Ba'alei Hamelacha st. Qiryat Bialik P.O.B 1095, ZIP 2751311, ISRAEL
+972(0)48736969 ☎ +972(0)48730708 📠 info@arbel-ltd.com 🌐 www.arbel-ltd.com 🌐

