

# A573



## INDEXED CLAMPING LEVER WITH 90° ARM AND THREADED STUD

### Materials:

Special technopolymer reinforced with high-strength glass fiber.  
Resistant to oils and greases.

### Surface finish:

Satin.

### Lever body and insert colour:

Black (RAL 9011).

### Inserts:

Galvanised steel threaded stud (thread tolerance 6g).

### Fixing screw:

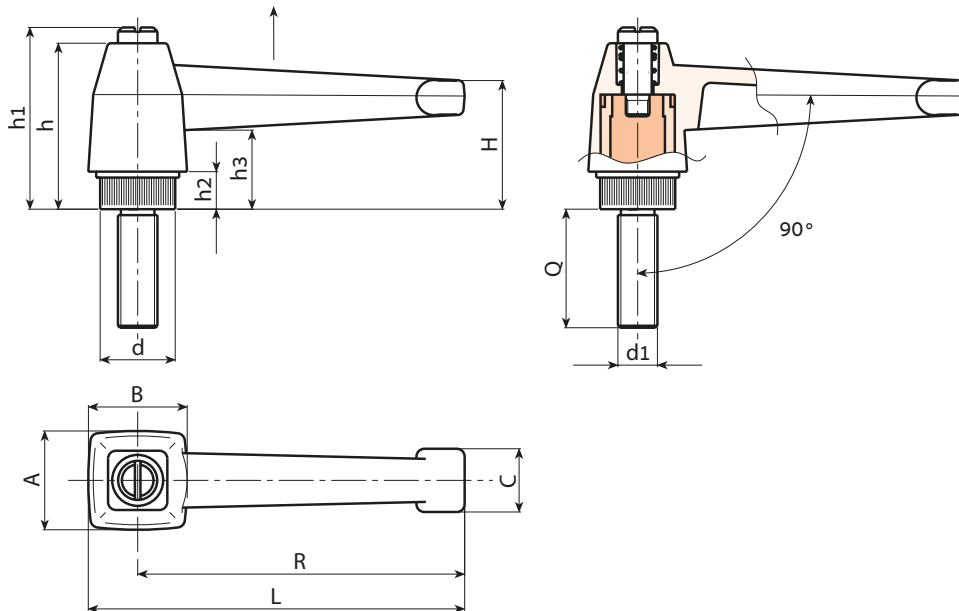
Black oxide treated steel screw with slotted head.

### Spring:

Stainless steel spring (Aisi 302).

### Special requests:

- Upon request and for special quantities inserts can be supplied with customised lengths.
- Upon request and for special quantities inserts can be supplied in different materials.
- Upon request and for special quantities available in the colours indicated in the chart (attention: reduced range) [page ].



Stock availability as % (🛒)  
90% (●) - 40% (●) - 5% (●)

🛒	Art.	L	R	H	A	B	c	h	h1	h2	h3	LM	d1 <sub>6g</sub>	Q	🛒
●	A573083.TM08X..01	94	83	33.5	25	25	16	42	47	10	21	90	M8	20-40	58-64
●	A573083.TM10X..01	94	83	33.5	25	25	16	42	47	10	21	90	M10	20-40	68-76
●	A573083.TM12X4001	94	83	33.5	25	25	16	42	47	10	21	90	M12	40	82

Enter the selected stud length in place of the two dots . . in the item code. Customised stud length available for a minimum of 150 pieces.

LM = Maximum mouldable length.



Arbel Agencies LTD.

11 Ba'alei Hamelacha st. Qiryat Bialik P.O.B 1095, ZIP 2751311, ISRAEL  
+972(0)48736969 ☎ +972(0)48730708 📠 info@arbel-ltd.com 🌐 www.arbel-ltd.com 🌐

