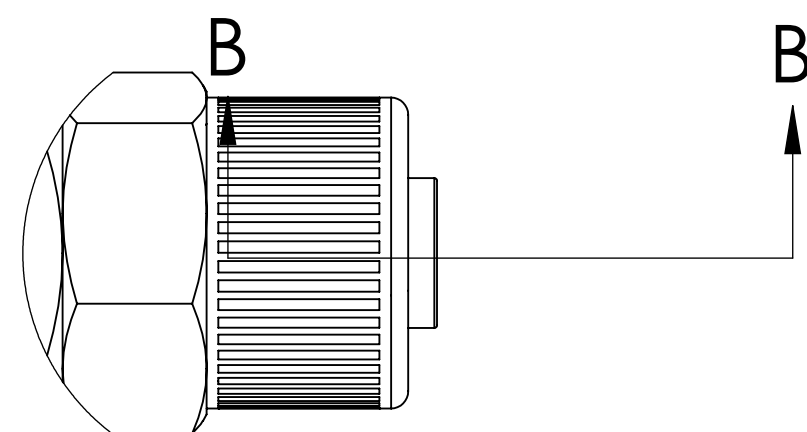
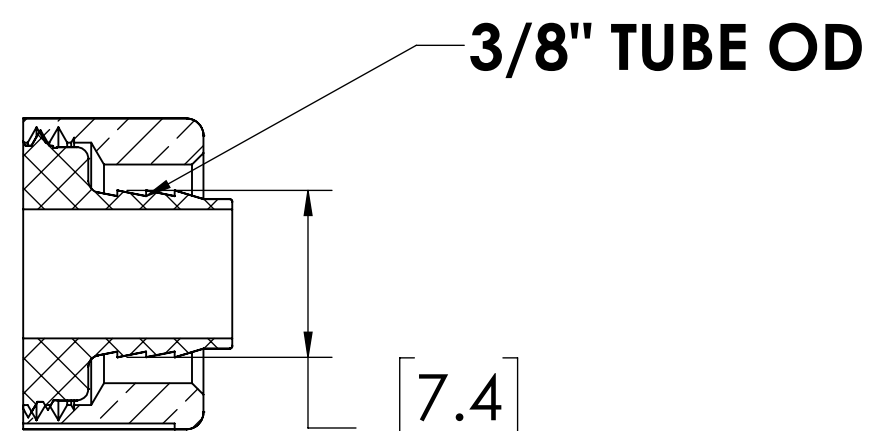


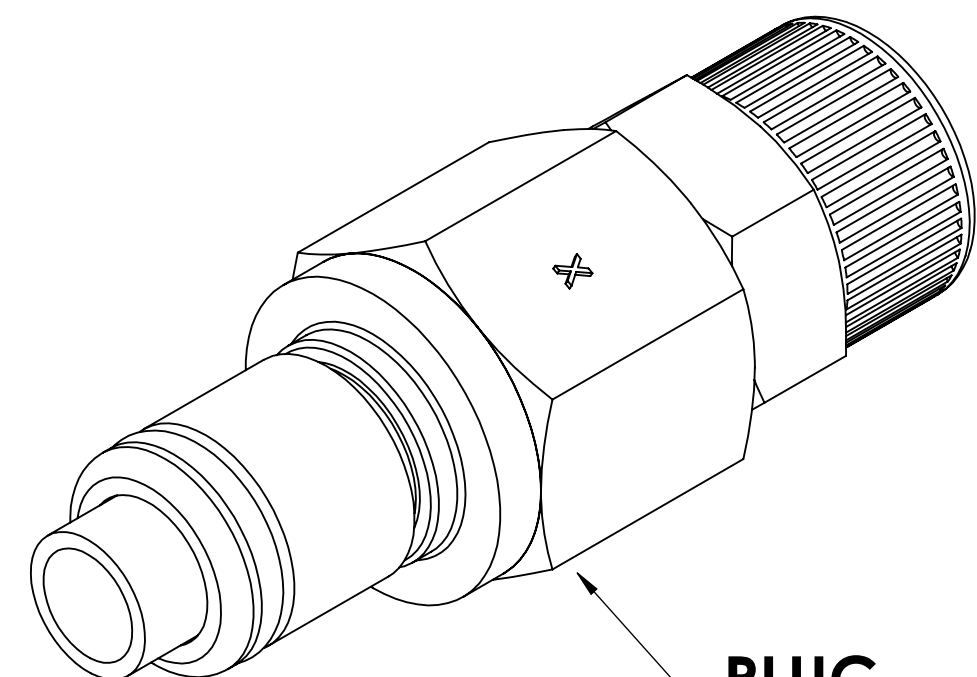
REVISIONS						
SHEET	ZONE	REV.	ECO	DESCRIPTION	DATE	APPROVED
1	ALL	A	50253	UPDATE DWG TO CURRENT FORMAT & STANDARDS	10/12/2018	HRC



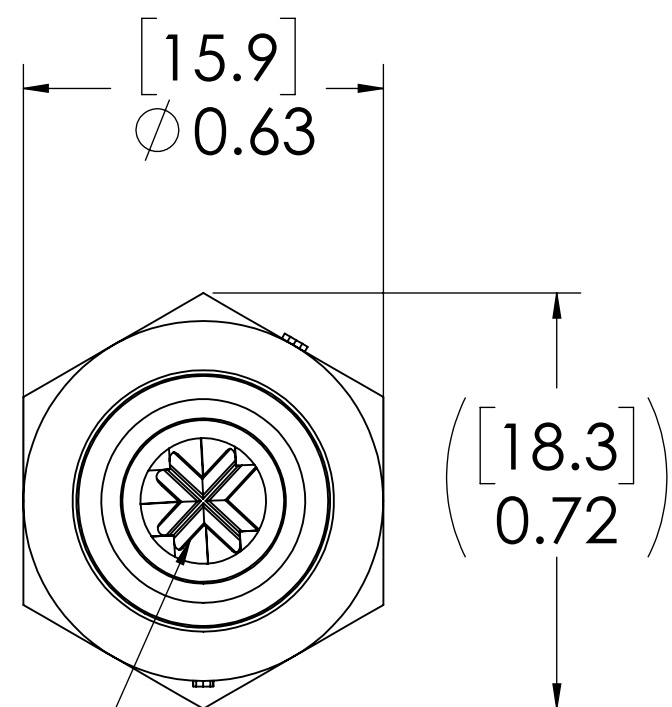
DETAIL A



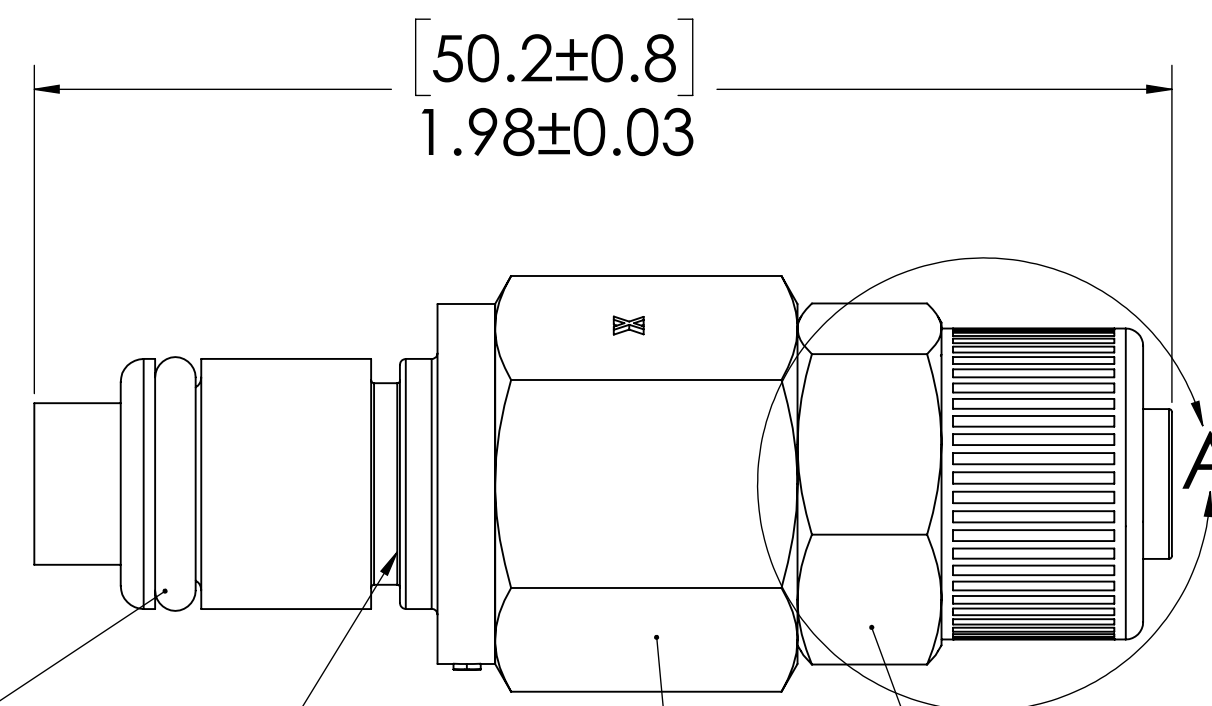
SECTION B-B



**PLUG
(ACETAL)**



**VALVE
(ACETAL)**



**O-RING
(BUNA-N)**

**VALVE O-RING
INTERNAL
(BUNA-N)**


**VALVE SPRING
INTERNAL
(STAINLESS STEEL)**

**PTF NUT
(BRASS, NICKEL PLATED)
(PACKAGED SEPARATELY)**

NOTES:

- MATERIAL: ACETAL
- COLOR: NATURAL WHITE
- O-RING MATERIAL: BUNA-N
- O-RINGS LUBRICATED WITH FOOD GRADE SILICONE OIL, 350 CST.

FOR REFERENCE ONLY

UNLESS OTHERWISE SPECIFIED:		NAME	DATE	 PART NO: 40ACV-PB9-06
DIMENSIONS ARE IN INCHES		DRAWN	LDM 11/20/17	
TOLERANCES:		CHECKED	HRC 11/20/17	
FRACTIONAL ± 1/32		ENG APPR.	HRC 10/12/18	
ANGULAR: MACH ± 0.5 BEND ± 2		MFG APPR.	BDB 10/12/18	
ONE PLACE DECIMAL ± 0.1		PRODUCTION	LS 10/12/18	SIZE DWG. NO. REV C 40AC400241 A
TWO PLACE DECIMAL ± 0.01		COMMENTS:		SCALE: NTS WEIGHT: SHEET 1 OF 1
THREE PLACE DECIMAL ± 0.005				
TWO PLACE DUAL (mm) [±0.12]				
<small>PROPRIETARY AND CONFIDENTIAL THE INFORMATION CONTAINED IN THIS DRAWING IS THE SOLE PROPERTY OF LINKTECH LLC. ANY REPRODUCTION OR DISCLOSURE IN PART OR AS A WHOLE WITHOUT THE WRITTEN PERMISSION OF LINKTECH LLC IS STRICTLY PROHIBITED.</small>				