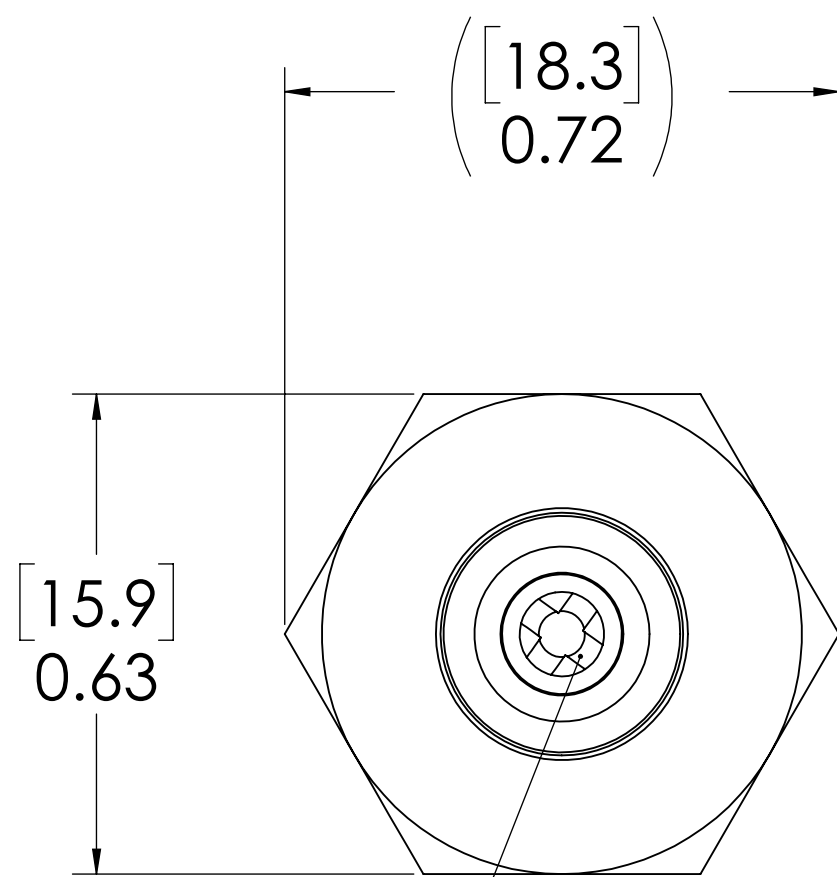
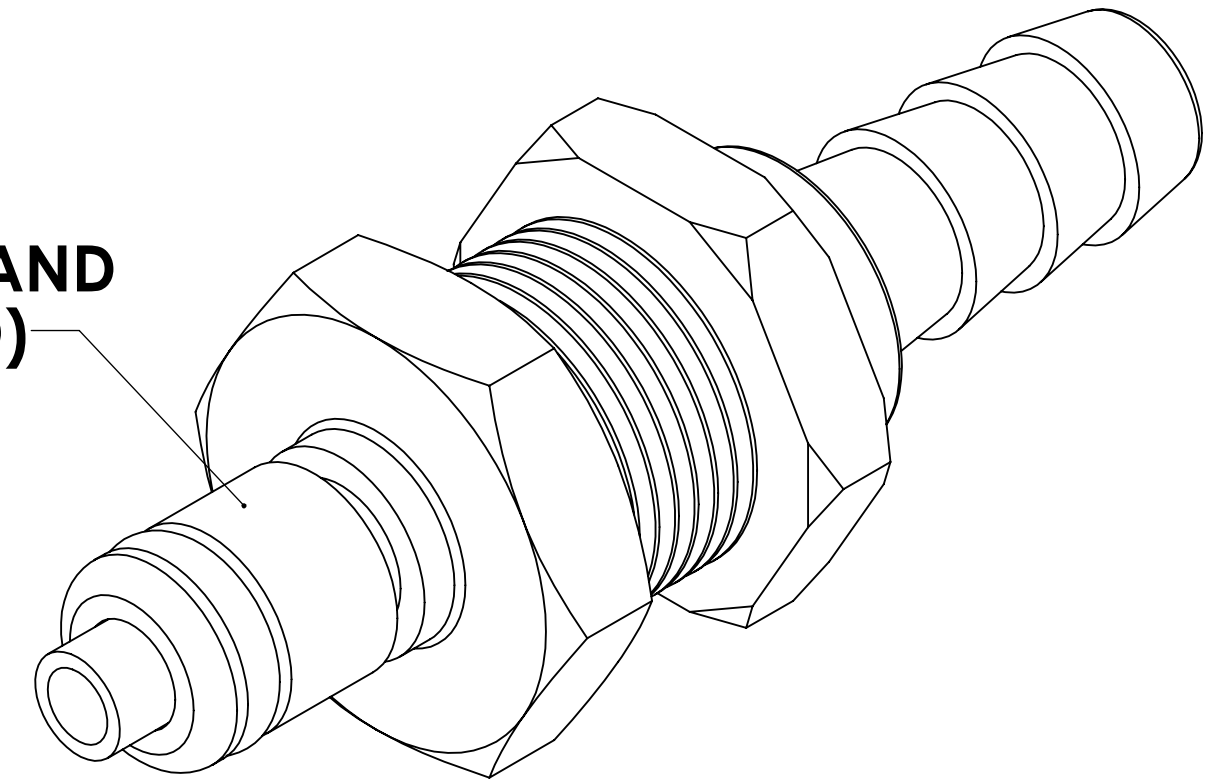
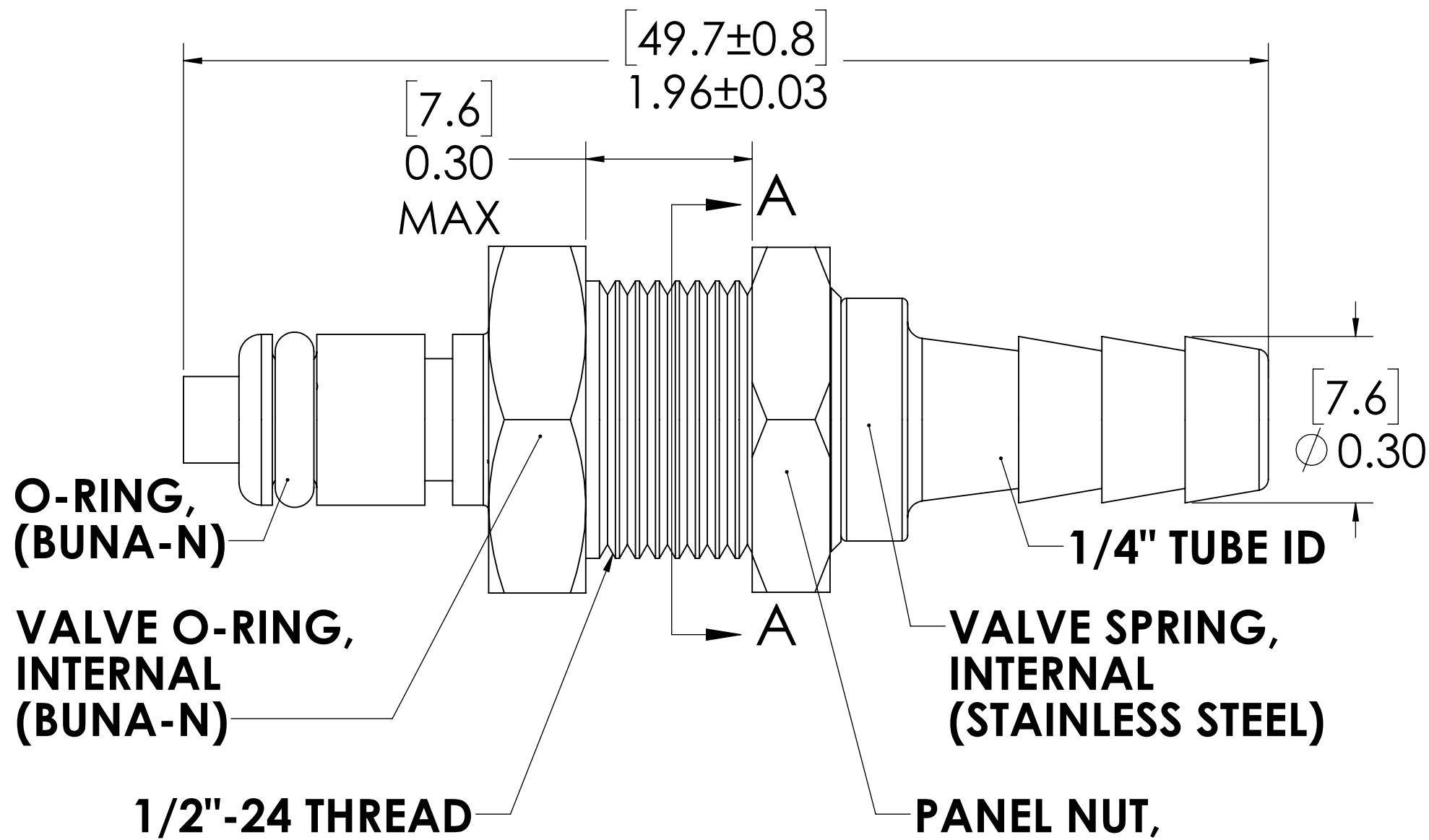


REVISIONS						
SHEET	ZONE	REV.	ECO	DESCRIPTION	DATE	APPROVED
1	ALL	A	.....	CONVERTED TO SOLID WORKS	4/18/2012	HRC
1	E-3	A	.....	CORRECTED PANEL NUT PART NUMBER	4/18/2012	HRC
1	ALL	B	50253	2017 FORMAT UPDATE	10/16/2018	HRC

PLUG,  
(BRASS, NICKEL AND  
CHROME PLATED)



VALVE,  
(ACETAL)

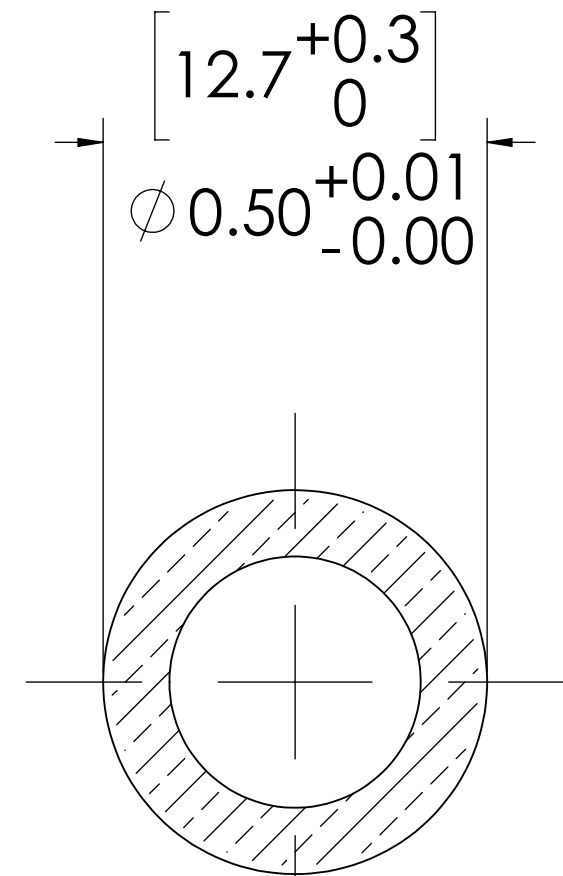


O-RING,  
(BUNA-N)

VALVE O-RING,  
INTERNAL  
(BUNA-N)

VALVE SPRING,  
INTERNAL  
(STAINLESS STEEL)

PANEL NUT,  
(BRASS, NICKEL PLATED)  
(PACKAGED SEPERATELY)




PANEL OPENING  
(SECTION A-A)

NOTES:

1. MATERIAL: BRASS
2. FINISH: CHROME
3. O-RING MATERIAL: BUNA-N
4. O-RINGS LUBRICATED WITH FOOD GRADE SILICONE OIL, 350 CST.

FOR REFERENCE ONLY

UNLESS OTHERWISE SPECIFIED:				NAME		DATE		
DIMENSIONS ARE IN INCHES TOLERANCES: FRACTIONAL ±1/32 ANGULAR, MACH ±0.5 BEND ±2 ONE PLACE DECIMAL ±0.1 TWO PLACE DECIMAL ±0.01 THREE PLACE DECIMAL ±0.005 TWO PLACE DUAL (mm) [±0.12]				DRAWN	HRC	4/18/12		
PROPRIETARY AND CONFIDENTIAL  THE INFORMATION CONTAINED IN THIS DRAWING IS THE SOLE PROPERTY OF LINKTECH LLC. ANY REPRODUCTION OR DISCLOSURE IN PART OR AS A WHOLE WITHOUT THE WRITTEN PERMISSION OF LINKTECH LLC IS STRICTLY PROHIBITED.				CHECKED	HRC	4/18/12	PART NO: 20CBV-PB3-04	
				ENG APPR.	HRC	10/16/18	DESCRIPTION: LinkTech 20CB Series Panel Mt. Male, Valved, 1/4" HB, Chrome Brass	
				MFG APPR.	BDB	10/16/18	SIZE C	DWG. NO. 20CB200094
				PRODUCTION COMMENTS:	LS	10/16/18	REV B	
				SCALE: NTS		WEIGHT:	SHEET 1 OF 1	