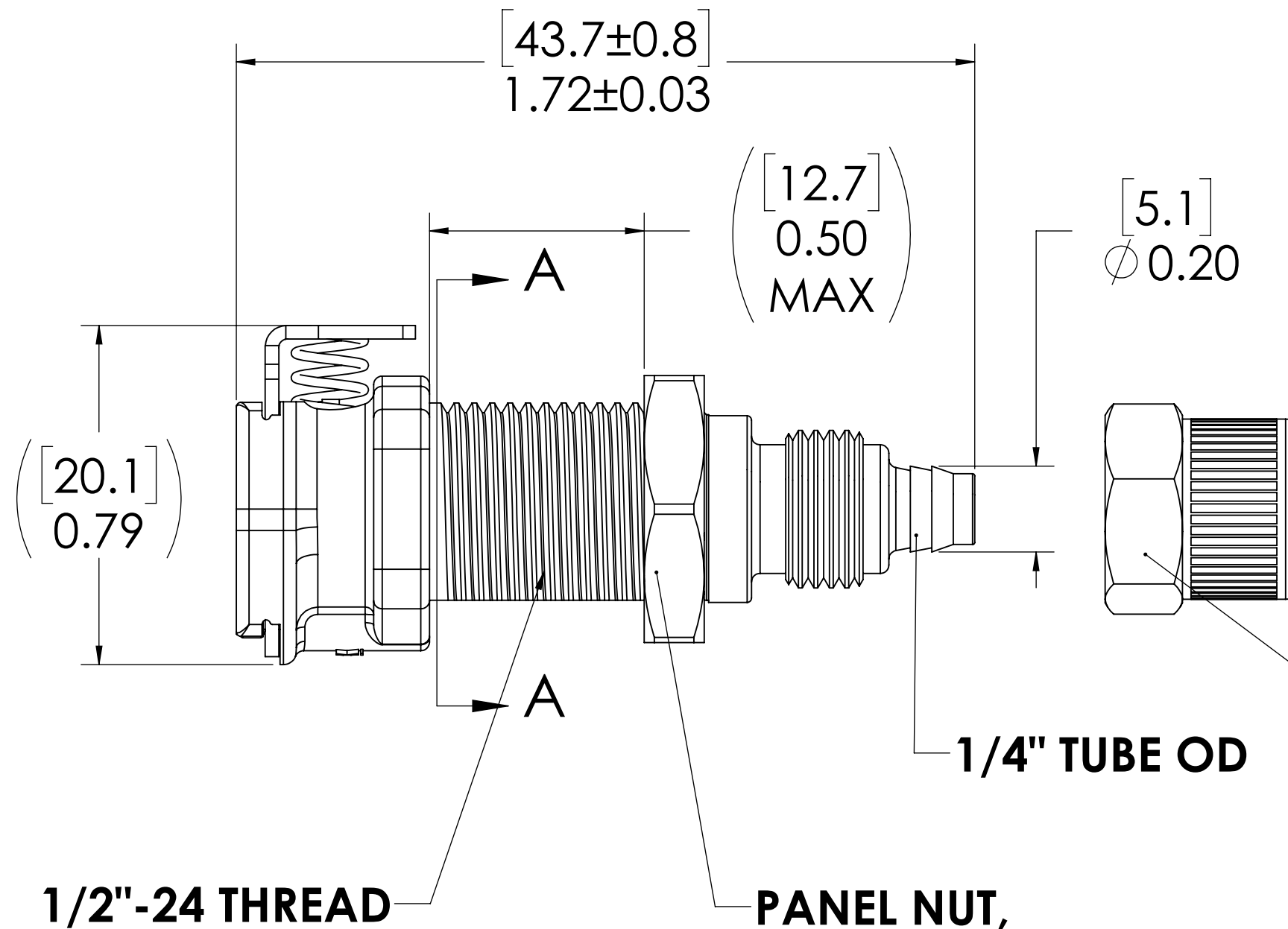
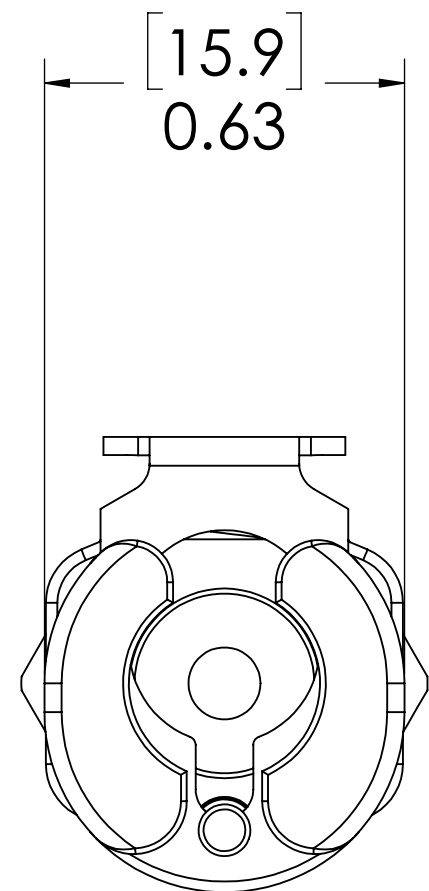
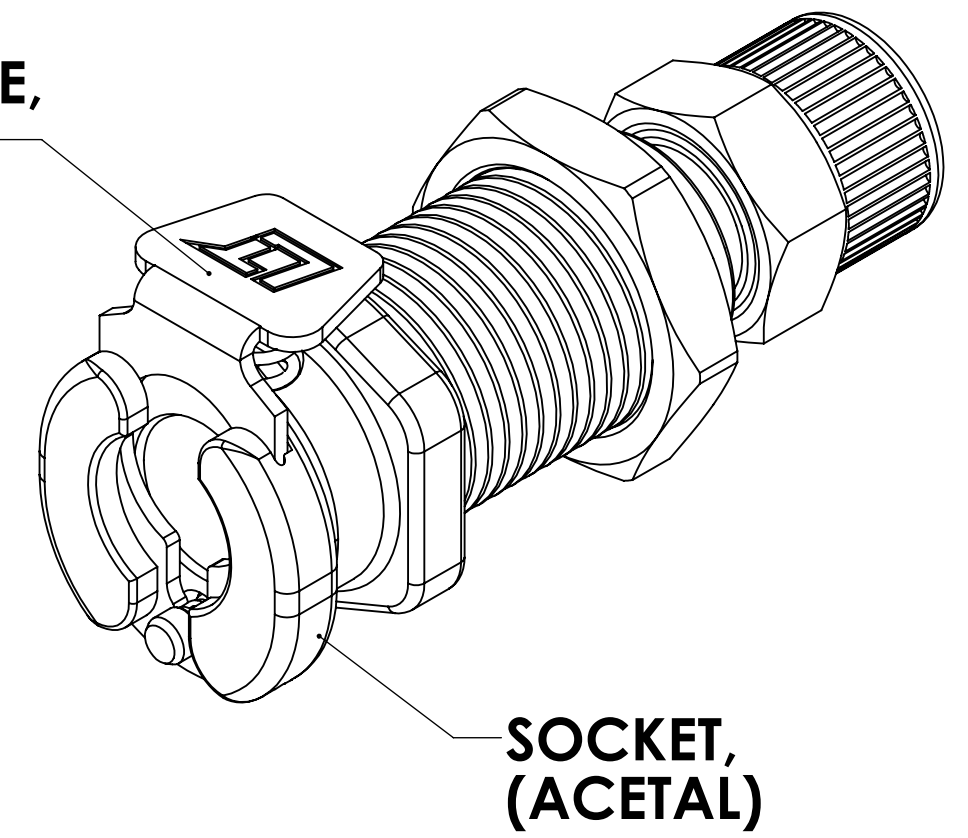


REVISIONS						
SHEET	ZONE	REV.	ECO	DESCRIPTION	DATE	APPROVED
1	ALL	A	50242	PIN & PIN SPRING UPDATE	7/3/2018	HRC



**LATCH HARDWARE,
(STAINLESS STEEL)**



**SOCKET,
(ACETAL)**

**PTF NUT,
(BRASS, NICKEL
PLATED)
(PACKAGED SEPARATELY)**

**PANEL OPENING
(SECTION A-A)**

FOR REFERENCE ONLY

NOTES:

- MATERIAL: ACETAL
- COLOR: NATURAL WHITE

UNLESS OTHERWISE SPECIFIED:		NAME	DATE	LINKTECH ANALOGICAL CONTROL	
DIMENSIONS ARE IN INCHES TOLERANCES: FRACTIONAL ±1/32 ANGULAR: MACH ±0.5 BEND ±2 ONE PLACE DECIMAL ±0.1 TWO PLACE DECIMAL ±0.01 THREE PLACE DECIMAL ±0.005 TWO PLACE DUAL (mm) [±0.12]		DRAWN	ER 10-02-17		PART NO: 20AC-S8-04
THE INFORMATION CONTAINED IN THIS DRAWING IS THE SOLE PROPERTY OF LINKTECH LLC. ANY REPRODUCTION OR DISCLOSURE IN PART OR AS A WHOLE WITHOUT THE WRITTEN PERMISSION OF LINKTECH LLC IS STRICTLY PROHIBITED.		CHECKED	HRC 10-02-17		
		ENG APPR.	HRC 7/3/18	DESCRIPTION: LinkTech 20AC Series Panel Mt. Female, Non-valved, 1/4" PTF, Natural Acetal	
		MFG APPR.	BDB 7/3/18		
PROPRIETARY AND CONFIDENTIAL		PRODUCTION	LS 7/3/18	SIZE DWG. NO. REV	
		COMMENTS:		C 20AC200360 A	
				SCALE: NTS WEIGHT: SHEET 1 OF 1	