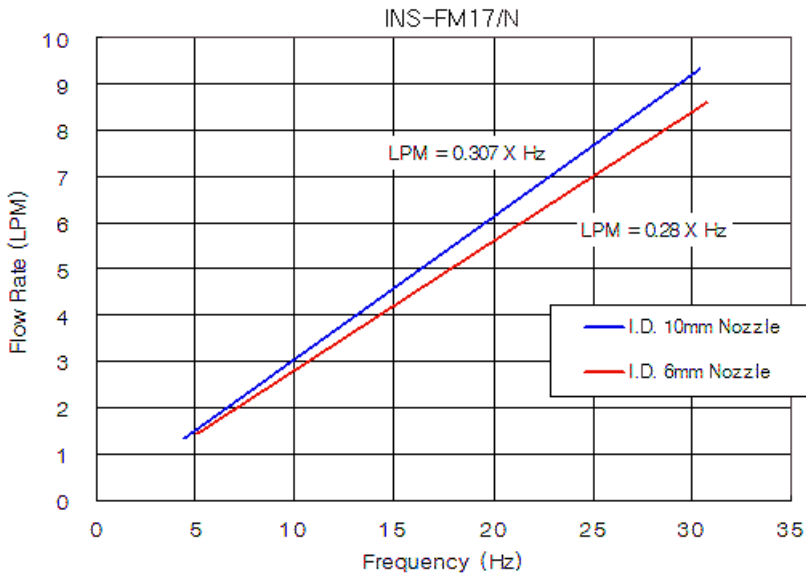
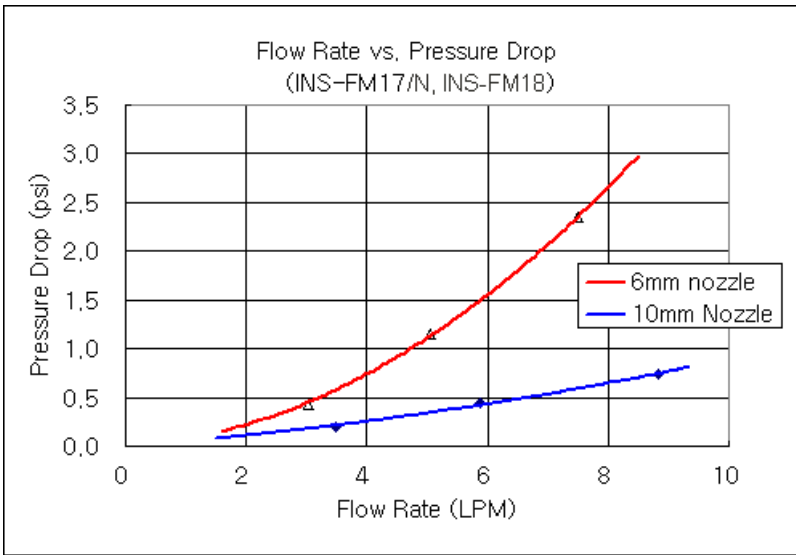


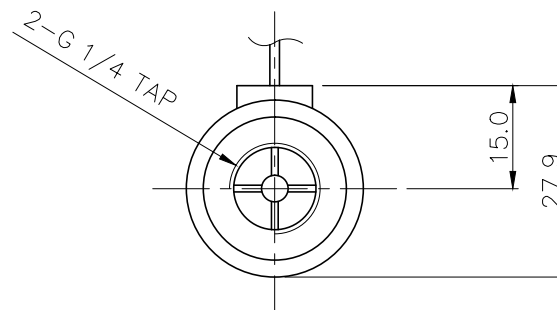
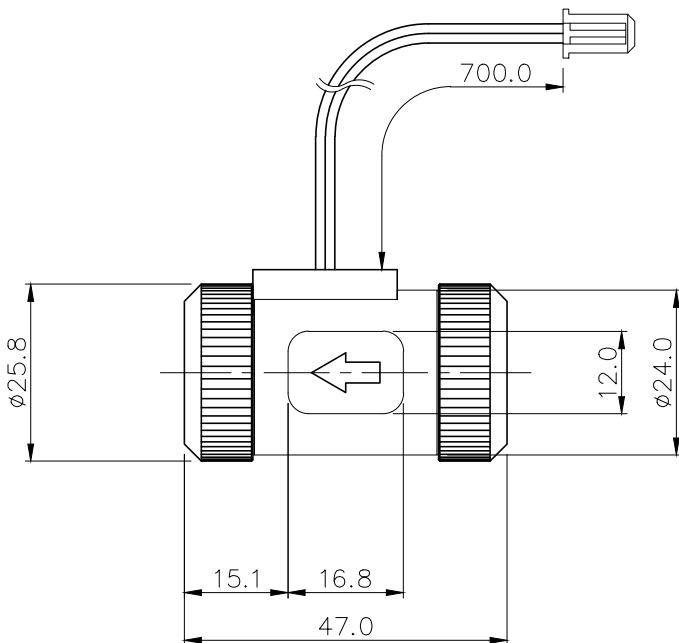
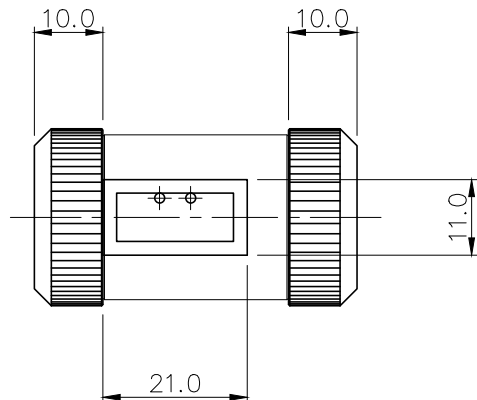


Koolance's inline flow meters provide electronic indication of real-time coolant flow rate. G 1/4 BSPP fitting threads, and primary materials are nickel-plated brass and acrylic. Approximate read range is 1.0-20 LPM (15.6-317 GPH). Wire length is about 28" (70cm). INS-FM19 is identical to INS-FM17N, but has an external metal shell for greater durability.

Koolance [DCB-FM01](#) or [CTR-KSM100](#) can be used to display the flow rate, if not connected to a compatible Koolance cooling system.

Flow Meters	
Accuracy (Approx.)	+/-5%
Flow Rate Range	1.0-20 LPM (15.6-317 GPH)
General	
Weight	0.16 lb (0.07 kg)
Fitting Thread	G 1/4 BSPP
Max Pressure Tolerance @ 25°C	5kgf/cm2 (71.1psi)
Max Temperature Tolerance	70°C (158°F)
Min Storage Temperature (*No Freezing)	0°C (32°F)
Wetted Materials	Nickel-Plated Brass, Brass, PMMA Acrylic, Stainless Steel, POM Acetal, Plastic, SmCo5





Arbel Agencies LTD.
 11 Ba'alei Hamelacha st. Qiryat Bialik P.O.B 1095, ZIP 2751311, ISRAEL
 +972(0)48736969 ☎ +972(0)48730708 📠 info@arbel-ltd.com 📧 www.arbel-ltd.com 🌐



NO.	DESCRIPTION	MATER'L		QUANTITY	REMARKS
		UNIT	MM		
	KOOLANCE			ITEM	INS-FM19
		SCALE	N/S	TITLE	
				Ass'y	
DATE	BY	BY	APPRO BY	3RD ANGLE	
	S.JLEE			CODE NO.	DWG. NO. PAGE

REV	DATE	CONTENTS	REVD BY	CHKD BY	APPD BY
REVISION					