

K900



SOLID CONTROL HANDWHEEL WITH INDICATOR SEAT

Material:
Reinforced polyamide.
Oils and greases resistant.

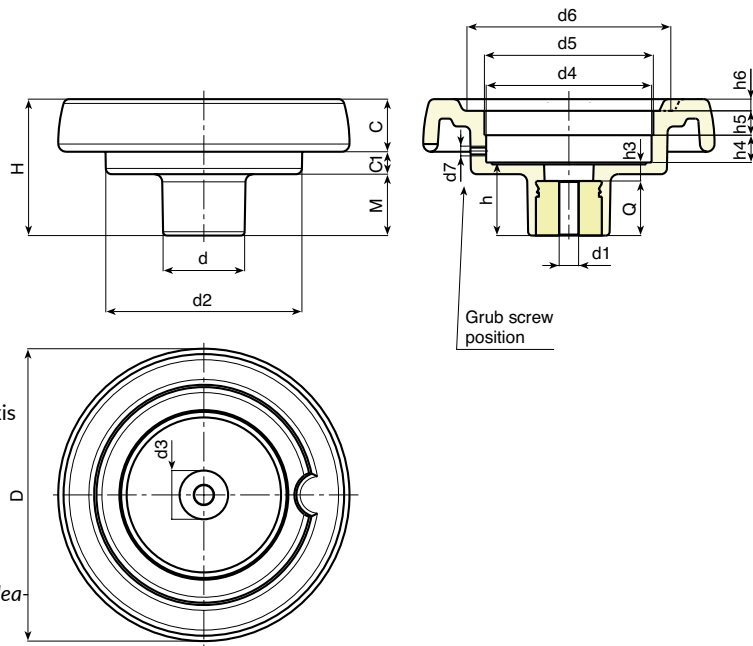
Surface:
Satin.

Colour:
Black (RAL 9011).

Main Insert:
Zinc plated steel right through bored bush with H10 tolerance.

Indicator mountable:
Use gravitational indicators K650 or K660 series. The indicator can be used in a vertical position (horizontal axis machine). The indicator and the grub screw (d7) must be purchased separately. For further information on the indicators refer to page K-24/25.
(*) With the adapter KS08050.T01 you can mount the indicator K650080.

For fixing system, or execution of keyway or square holes, please refer to the technical notes attached to the catalogue.



SPECIAL REQUESTS:

- It is possible to supply the inserts with d1 diameter by customers design, on request and for quantities.
- It is possible to supply the inserts in different materials, on request and for quantities.
- It is possible to supply the handwheels complete with indicators.
- Upon request and for quantities the indicator seat can be adjusted.

Matches diameters / Indicators:

d5=52,4 --> K650050
d5=87,4 --> K650080 o K660080
d5=124,4 --> K650120

Version with zinc plated insert and H10 tolerance bore

art.	D	H	d	d2	M	C	C1	d3	d4	d5 (K650)	d6	d7	h	h3	h4	h5	h6	Dm	d1 H10	Q	Δg
K900087.T050D5,801P	86	53	32	62	21	17	15	20	50,8	52,4	63	M6	26,5	6,5	11,5	12	3	12	5,8	20	155
K900100.T050D6,801P	99	55,5	32	63	23,5	20,5	11,5	20	50,8	52,4	68	M6	29	9	11,5	12	3,5	12	6,8	20	170
K900130.T080D6,801P	129	64,5	42	100	27,5	23	14	29	85,7	87,4*	90	M6	34	10	13,5	12,5	5	20	6,8	24	350
K900150.T080D6,801P	149	69	42	101	31	25,5	12,5	29	85,7	87,4*	106	M6	37	9	13,5	12,5	6,5	20	6,8	28	430
K900175.T080D6,801P	175	72	40	115	28,5	32	11,5	25	85,7	87,4*	126,5	M6	38	10	12,5	14	8	20	6,8	28	650
K900200.T120D6,801P	199	71	46	137	24	32	15	29	123	124,4	144	M6	34	11	13,5	12,5	10	22	6,8	23	810

Attention: bore d1 (H10 tolerance) could be produced by request, with 50 pieces minimum.

Dm = It's possible to increase the hole, by boring, until Dm (enlarge).

Version with black-oxide insert and H7 tolerance bore

art.	D	H	d	d2	M	C	C1	d3	d4	d5 (K650)	d6	d7	h	h3	h4	h5	h6	Dm	d1 H7	Q	Δg
K900087.T050D..01PZB	86	53	32	62	21	17	15	20	50,8	52,4	63	M6	26,5	6,5	11,5	12	3	12	A.R.	20	155
K900100.T050D..01PZB	99	55,5	32	63	23,5	20,5	11,5	20	50,8	52,4	68	M6	29	9	11,5	12	3,5	12	A.R.	20	170
K900130.T080D..01PZB	129	64,5	42	100	27,5	23	14	29	85,7	87,4*	90	M6	34	10	13,5	12,5	5	20	A.R.	24	350
K900150.T080D..01PZB	149	69	42	101	31	25,5	12,5	29	85,7	87,4*	106	M6	37	9	13,5	12,5	6,5	20	A.R.	28	430
K900175.T080D..01PZB	175	72	40	115	28,5	32	11,5	25	85,7	87,4*	126,5	M6	38	10	12,5	14	8	20	A.R.	28	650
K900200.T120D..01PZB	199	71	46	137	24	32	15	29	123	124,4	144	M6	34	11	13,5	12,5	10	22	A.R.	23	810

Attention: replace the two places in the code .. with the hole diameter required - 50 pieces minimum.

Dm = It's possible to increase the hole, by boring, until Dm (enlarge). **A.R.** = By request

Presumable presence in the stock in %
90% ● 40% ● 5% ●